

Viola

Scales for Orchestra

One and two octaves with arpeggios

Scales for Orchestra

Viola

One Octave Scales and Arpeggios

Arr. Somerville

Basic Finger Patterns

Fox (1 2 3 4)

Rabbit (1 2 3 4)

Teacup (1 2 3 4)

Open (1 2 3 4)

C Major

Teacup

Fox

G Major

Fox

D Major

Fox

Rabbit

A Major

Rabbit

F Major

Teacup

B^b Major

Open

E^b Major

Open

G Melodic Minor

Teacup Fox Rabbit Teacup

Chromatic (lowest open string)

0 1 1 2 2 3 4

0 1 2 1 2 3 4 1 2 4 2

Two Octave Major Scales and Arpeggios

C Major

Ascending: C4 (quarter), D4 (quarter), E4 (quarter), F4 (quarter), G4 (quarter), A4 (quarter), B4 (quarter), C5 (quarter), B4 (quarter), A4 (quarter), G4 (quarter), F4 (quarter), E4 (quarter), D4 (quarter), C4 (quarter).

Descending: C5 (quarter), B4 (quarter), A4 (quarter), G4 (quarter), F4 (quarter), E4 (quarter), D4 (quarter), C4 (quarter), B3 (quarter), A3 (quarter), G3 (quarter), F3 (quarter), E3 (quarter), D3 (quarter), C3 (quarter).

Ascending: C4 (quarter), E4 (quarter), G4 (quarter), C5 (quarter), B4 (quarter), A4 (quarter), G4 (quarter), F4 (quarter), E4 (quarter), C4 (quarter).

Descending: C5 (quarter), B4 (quarter), A4 (quarter), G4 (quarter), F4 (quarter), E4 (quarter), C4 (quarter), B3 (quarter), A3 (quarter), G3 (quarter), F3 (quarter), E3 (quarter), C3 (quarter).

G Major

Ascending: G4 (quarter), A4 (quarter), B4 (quarter), C5 (quarter), D5 (quarter), E5 (quarter), F5 (quarter), G5 (quarter), F5 (quarter), E5 (quarter), D5 (quarter), C5 (quarter), B4 (quarter), A4 (quarter), G4 (quarter).

Descending: G5 (quarter), F5 (quarter), E5 (quarter), D5 (quarter), C5 (quarter), B4 (quarter), A4 (quarter), G4 (quarter), F4 (quarter), E4 (quarter), D4 (quarter), C4 (quarter), B3 (quarter), A3 (quarter), G3 (quarter).

Fingering: 1, 1, 2, 1, 2.

Ascending: G4 (quarter), B4 (quarter), D5 (quarter), G5 (quarter), F5 (quarter), E5 (quarter), D5 (quarter), C5 (quarter), B4 (quarter), G4 (quarter).

Descending: G5 (quarter), F5 (quarter), E5 (quarter), D5 (quarter), C5 (quarter), B4 (quarter), G4 (quarter), F4 (quarter), E4 (quarter), D4 (quarter), C4 (quarter), B3 (quarter), G3 (quarter).

Fingering: 1, 1, 2.

D Major

Ascending: D4 (quarter), E4 (quarter), F#4 (quarter), G4 (quarter), A4 (quarter), B4 (quarter), C#5 (quarter), D5 (quarter), C#5 (quarter), B4 (quarter), A4 (quarter), G4 (quarter), F#4 (quarter), E4 (quarter), D4 (quarter).

Descending: D5 (quarter), C#5 (quarter), B4 (quarter), A4 (quarter), G4 (quarter), F#4 (quarter), E4 (quarter), D4 (quarter), C#4 (quarter), B3 (quarter), A3 (quarter), G3 (quarter), F#3 (quarter), E3 (quarter), D3 (quarter).

Ascending: D4 (quarter), F#4 (quarter), A4 (quarter), D5 (quarter), C#5 (quarter), B4 (quarter), A4 (quarter), G4 (quarter), F#4 (quarter), D4 (quarter).

Descending: D5 (quarter), C#5 (quarter), B4 (quarter), A4 (quarter), G4 (quarter), F#4 (quarter), D4 (quarter), C#4 (quarter), B3 (quarter), A3 (quarter), G3 (quarter), F#3 (quarter), D3 (quarter).

A Major

Two staves of musical notation for the A Major scale. The first staff shows the ascending and descending scales in treble clef with fingerings 1, 3, 1, 2, 3, 2, 1. The second staff shows the ascending and descending scales in bass clef with fingerings 1, 2, 3, 2, 1.

F Major

Two staves of musical notation for the F Major scale. The first staff shows the ascending and descending scales in treble clef with fingerings 1, 2, 3, 2, 1, 2, 3, 2, 1. The second staff shows the ascending and descending scales in bass clef with fingerings 1, 2, 3, 2, 1.

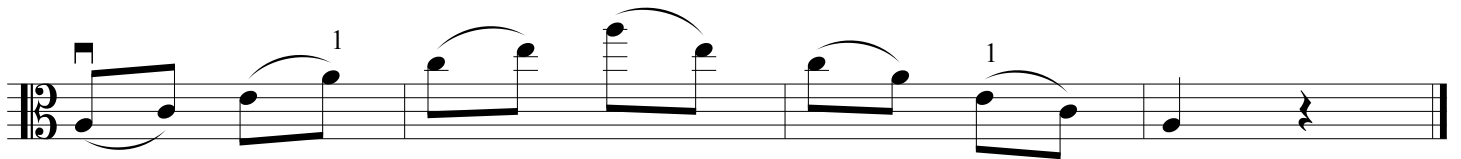
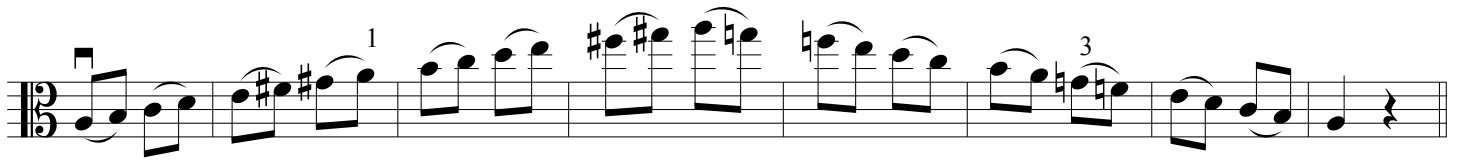
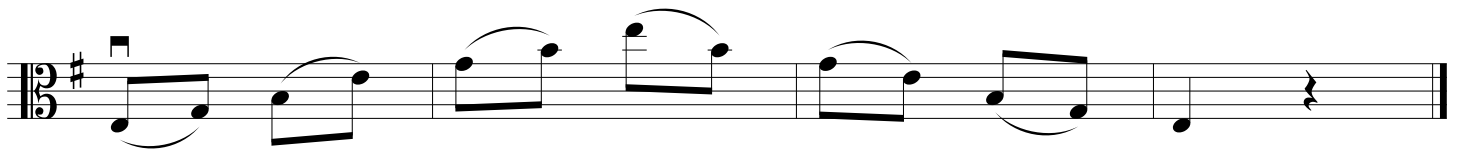
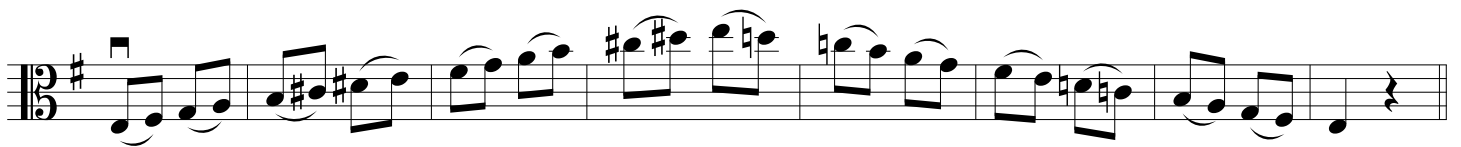
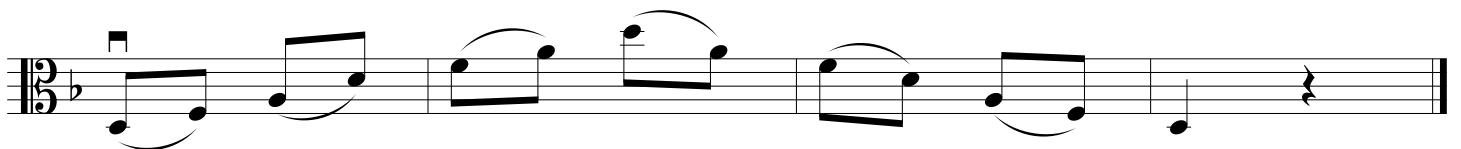
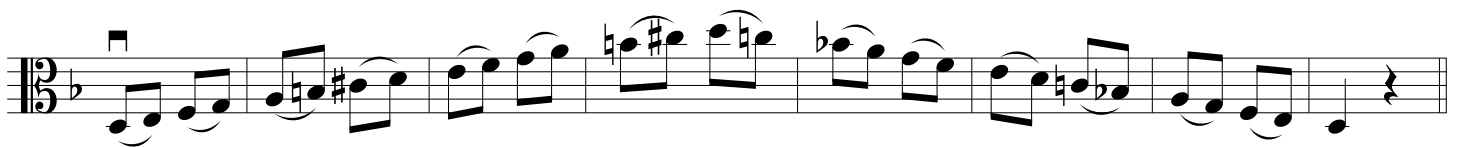
B \flat Major

Two staves of musical notation for the B-flat Major scale. The first staff shows the ascending and descending scales in treble clef with fingerings 1, 2, 3, 2, 1, 2, 3, 2, 1. The second staff shows the ascending and descending scales in bass clef with fingerings 1, 2, 3, 2, 1.

E \flat Major

Two staves of musical notation for the E-flat Major scale. The first staff shows the ascending and descending scales in treble clef. The second staff shows the ascending and descending scales in bass clef.

Two Octave Melodic Minor Scales and Minor Arpeggios

A Melodic Minor**E Melodic Minor****D Melodic Minor**

G Melodic Minor

Ascending: G2, A2, B2, C3, D3, E3, F#3, G3, A3, B3, C4, D4, E4, F#4, G4. Fingerings: 1, 2, 3, 4, 5, 1, 2, 3, 4, 5, 1, 2, 3, 4, 5.

Descending: G4, F#4, E4, D4, C4, B3, A3, G3, F3, E3, D3, C3, B2, A2, G2. Fingerings: 4, 3, 2, 1, 2, 3, 4, 5, 4, 3, 2, 1, 2, 3, 4, 5.

C Melodic Minor

Ascending: C2, D2, E2, F2, G2, A2, Bb2, C3, D3, E3, F3, G3, Ab3, C4. Fingerings: 1, 2, 3, 4, 5, 1, 2, 3, 4, 5, 1, 2, 3, 4, 5.

Descending: C4, Ab3, G3, F3, E3, D3, C3, Bb2, A2, G2, F2, E2, D2, C2. Fingerings: 4, 3, 2, 1, 2, 3, 4, 5, 4, 3, 2, 1, 2, 3, 4, 5.

Chromatic (lowest open string)

Ascending: C2, C#2, D2, D#2, E2, E#2, F2, F#2, G2, G#2, A2, A#2, B2, B#2, C3. Fingerings: 0, 1, 1, 2, 2, 3, 4, 1, 1, 1, 1, 1, 1, 1, 2.

Descending: C3, B#2, B2, A#2, A2, G#2, G2, F#2, F2, E#2, E2, D#2, D2, C#2, C2. Fingerings: 3, 4, 2, 4, 2, 4, 2, 4, 2, 4, 2, 4, 2, 4.

All-County/Tri-County Scale Requirements

All scales must be played from memory

Middle School: One octave C, G, D, A, F, B \flat major scales
One octave G melodic minor scale

High School: Two octave C, G, D, A, F, B \flat , E \flat major scales
(Basses play C, D, B \flat , E \flat one octave)
Two octave G melodic minor scale

Jr. All-State (Gr. 7-9) Scale Requirements

All scales must be played from memory

Two octave C, G, D, A, F, B \flat , E \flat major scales with arpeggio
(Basses play B \flat , C, D one octave with arpeggio)
Two octave A and D melodic minor scales
(Basses play E and G melodic minor scales)

Solo & Ensemble Festival Scale Requirements

All scales must be played from memory. Scales are only required for solos.

Grade I-III must play one octave scales
Grade IV-VI must play two octave scales

C, G, D, A, F, B \flat , E \flat major scales
Chromatic scale