

Cello

Scales for Orchestra

One and two octaves with arpeggios

Scales for Orchestra

Cello

One Octave Scales and Arpeggios

Arr. Somerville

Basic Finger Patterns

Regular (1 2 3 4)

Extended (1 2 3 4)

C Major

Regular

The C Major scale is written in bass clef with a 4/4 time signature. The scale is presented in two directions: ascending and descending. The ascending scale starts on C2 and ends on C3, while the descending scale starts on C3 and ends on C2. The fingering pattern is indicated as 'Regular' above the first measure of the ascending scale.

G Major

Regular

The G Major scale is written in bass clef with a 4/4 time signature. The scale is presented in two directions: ascending and descending. The ascending scale starts on G2 and ends on G3, while the descending scale starts on G3 and ends on G2. The fingering pattern is indicated as 'Regular' above the first measure of the ascending scale.

D Major

Regular

The D Major scale is written in bass clef with a 4/4 time signature. The scale is presented in two directions: ascending and descending. The ascending scale starts on D2 and ends on D3, while the descending scale starts on D3 and ends on D2. The fingering pattern is indicated as 'Regular' above the first measure of the ascending scale.

Extended

A Major

Extended

The A Major scale is written in bass clef with a 4/4 time signature. The scale is presented in two directions: ascending and descending. The ascending scale starts on A2 and ends on A3, while the descending scale starts on A3 and ends on A2. The fingering pattern is indicated as 'Extended' above the first measure of the ascending scale.

F Major

Regular

**B \flat Major**

Extended

**E \flat Major**

Extended

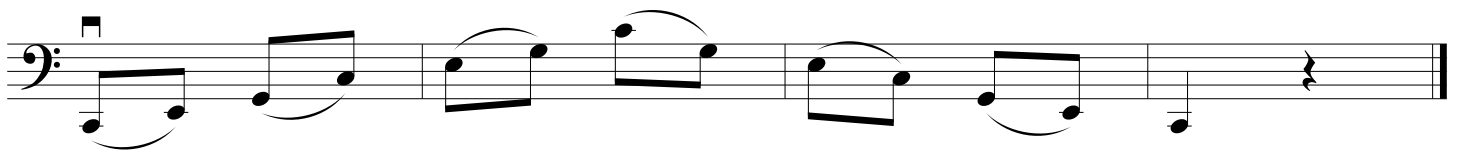
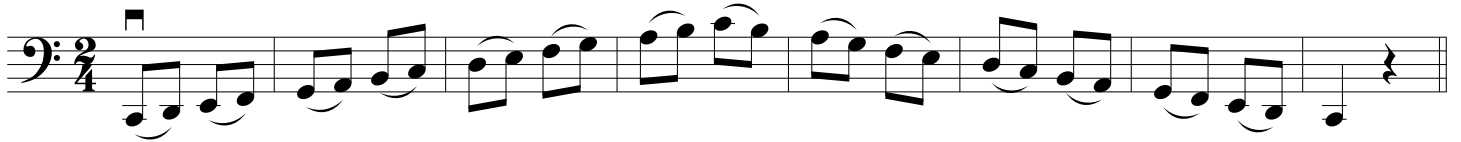
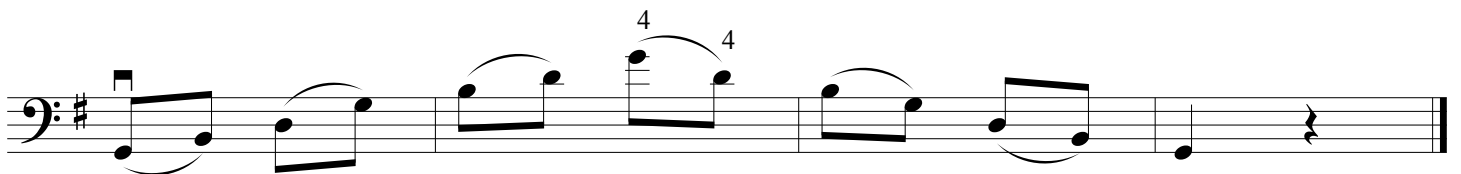
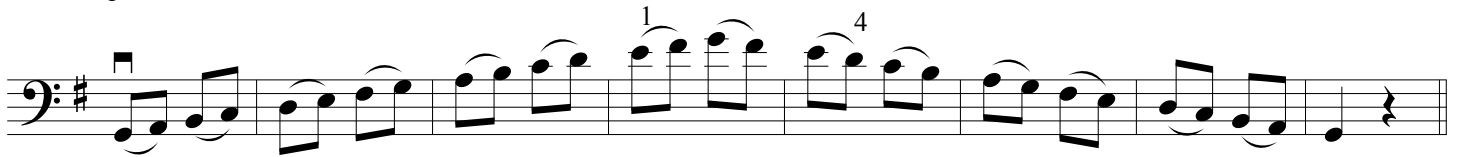
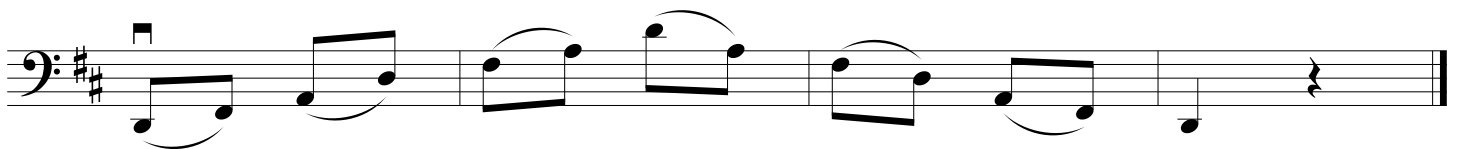
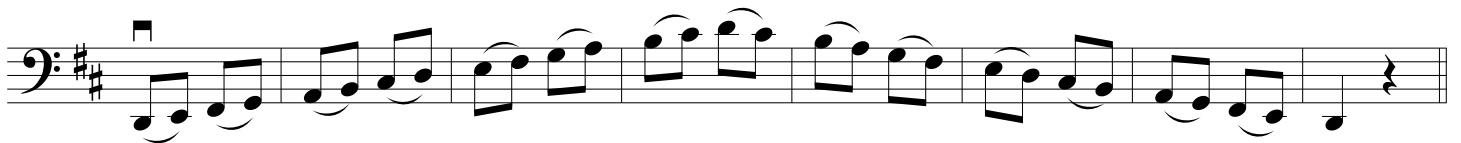
**G Melodic Minor**

Regular

Extended Regular

**Chromatic (lowest open string)**

Two Octave Major Scales and Arpeggios

C Major**G Major****D Major**

A Major

Ascending scale (Staff 1):
 Fingering: 1, 1, 1, 1, 3, 4

Descending scale (Staff 2):
 Fingering: 1, 3, 1, 3, 1

F Major

Ascending scale (Staff 1):
 Fingering: 1, 2

Descending scale (Staff 2):
 Fingering: 1, 2

B \flat Major

Ascending scale (Staff 1):
 Fingering: 1, 1, 4, 2

Descending scale (Staff 2):
 Fingering: 1, 3, 4, 1, 2

E \flat Major

Ascending scale (Staff 1):
 Fingering: 1, 1, 4, 2

Descending scale (Staff 2):
 Fingering: 1, 1

Two Octave Melodic Minor Scales and Minor Arpeggios

A Melodic Minor

Ascending: A2, B2, C3, D3, E3, F#3, G#3, A3. Fingerings: 1, 1, 3, 4, 4. An accent is placed over the G#3 note.

Descending: G#3, F#3, E3, D3, C3, B2, A2. Fingerings: 3, 2.

Ascending: A3, B3, C4, D4, E4, F#4, G#4, A4. Fingerings: 1, 3, 1, 1. An accent is placed over the G#4 note.

Descending: G#4, F#4, E4, D4, C4, B3, A3. Fingerings: 1.

E Melodic Minor

Ascending: E2, F#2, G#2, A2, B2, C3, D3, E3. Fingerings: 1, 1, 1, 2. An accent is placed over the C3 note.

Descending: D3, C3, B2, A2, G#2, F#2, E2. Fingerings: 2, 1.

Ascending: E3, F#3, G#3, A3, B3, C4, D4, E4. Fingerings: 1, 1, 1.

Descending: D4, C4, B3, A3, G#3, F#3, E3. Fingerings: 1.

D Melodic Minor

Ascending: D2, E2, F#2, G#2, A2, B2, C3, D3. Fingerings: 1, 1, 1, 1, 2. An accent is placed over the C3 note.

Descending: C3, B2, A2, G#2, F#2, E2, D2. Fingerings: 2, 1, 1.

Ascending: D3, E3, F#3, G#3, A3, B3, C4, D4. Fingerings: 1, 1, 1, 1.

Descending: C4, B3, A3, G#3, F#3, E3, D3. Fingerings: 1, 1, 1.

G Melodic Minor

Two staves of musical notation for the G Melodic Minor scale in bass clef. The first staff shows the ascending scale with fingerings 1, 4, and 4. The second staff shows the descending scale with fingerings 4, 4.

C Melodic Minor

Two staves of musical notation for the C Melodic Minor scale in bass clef. The first staff shows the ascending scale with fingerings 1 and 4. The second staff shows the descending scale.

Chromatic (lowest open string)

Two staves of musical notation for the chromatic scale starting on the lowest open string in bass clef. The first staff shows the ascending scale with fingerings 0, 1, 1, 2, 2, 3, 4. The second staff shows the descending scale with triplets of 3.

All-County/Tri-County Scale Requirements

All scales must be played from memory

Middle School: One octave C, G, D, A, F, B \flat major scales
One octave G melodic minor scale

High School: Two octave C, G, D, A, F, B \flat , E \flat major scales
(Basses play C, D, B \flat , E \flat one octave)
Two octave G melodic minor scale

Jr. All-State (Gr. 7-9) Scale Requirements

All scales must be played from memory

Two octave C, G, D, A, F, B \flat , E \flat major scales with arpeggio
(Basses play B \flat , C, D one octave with arpeggio)
Two octave A and D melodic minor scales
(Basses play E and G melodic minor scales)

Solo & Ensemble Festival Scale Requirements

All scales must be played from memory. Scales are only required for solos.

Grade I-III must play one octave scales
Grade IV-VI must play two octave scales

C, G, D, A, F, B \flat , E \flat major scales
Chromatic scale