

Violin

Scales for Orchestra

One and two octaves with arpeggios

Scales for Orchestra

Violin

One Octave Scales and Arpeggios

Arr. Somerville

Basic Finger Patterns

Fox (1 2 3 4)

Rabbit (1 2 3 4)

Teacup (1 2 3 4)

Open (1 2 3 4)

C Major

Teacup

G Major

Teacup

D Major

Fox

A Major

Fox

F Major

Open

Musical notation for the F Major scale in 4/4 time. The scale begins with an open string (indicated by a square symbol above the first note). The notes are: F (open), G, A, Bb, C, D, E, F. The scale is played in two directions: ascending and descending. The descending line ends with a fermata over the final F note.

Bb Major

Rabbit

Musical notation for the Bb Major scale in 4/4 time. The scale begins with a 'Rabbit' fingering (indicated by a square symbol above the first note). The notes are: Bb, C, D, Eb, F, G, A, Bb. The scale is played in two directions: ascending and descending. The descending line ends with a fermata over the final Bb note.

Open

Eb Major

Rabbit

Musical notation for the Eb Major scale in 4/4 time. The scale begins with a 'Rabbit' fingering (indicated by a square symbol above the first note). The notes are: Eb, F, G, Ab, Bb, C, D, Eb. The scale is played in two directions: ascending and descending. The descending line ends with a fermata over the final Eb note.

G Melodic Minor

Teacup Fox Rabbit Teacup

Musical notation for the G Melodic Minor scale in 4/4 time. The scale begins with a 'Teacup' fingering (indicated by a square symbol above the first note). The notes are: G, Ab, Bb, C, D, Eb, F, G. The scale is played in two directions: ascending and descending. The descending line ends with a fermata over the final G note.

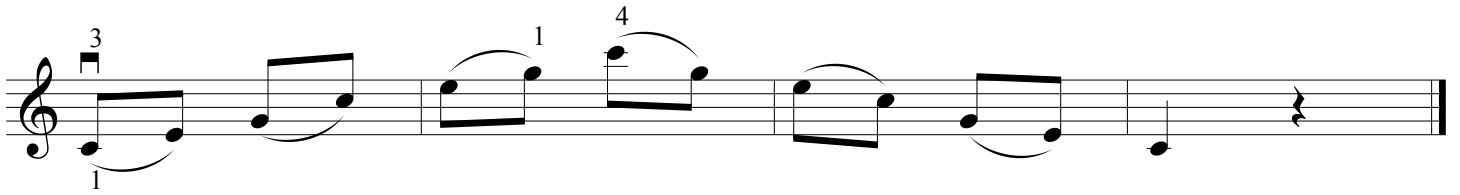
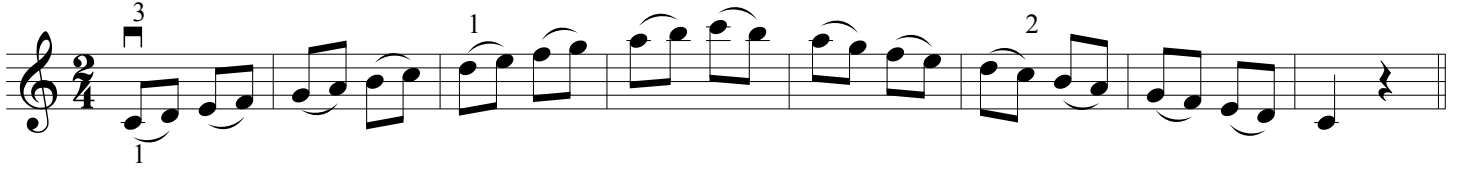
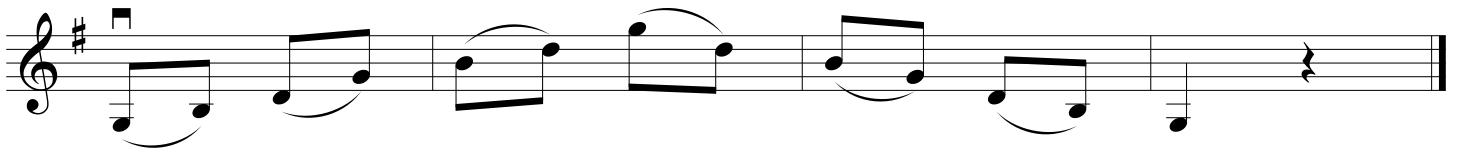
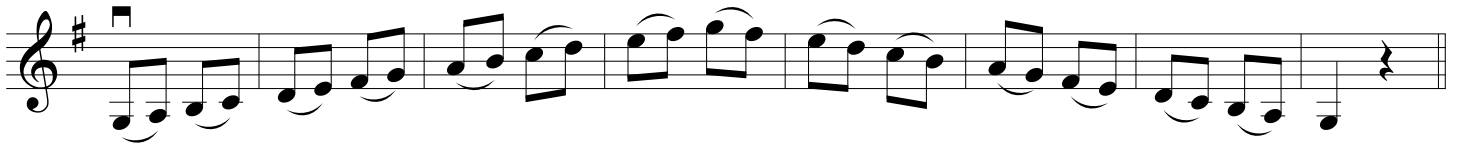
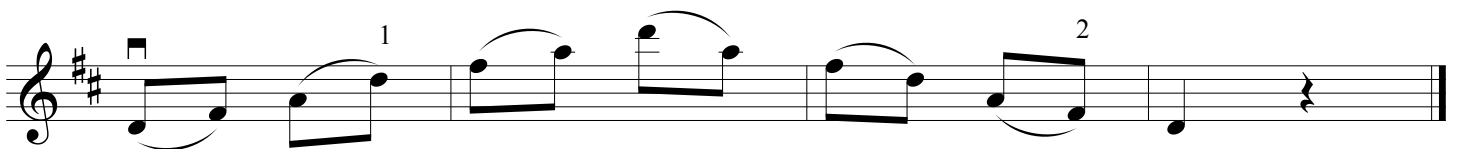
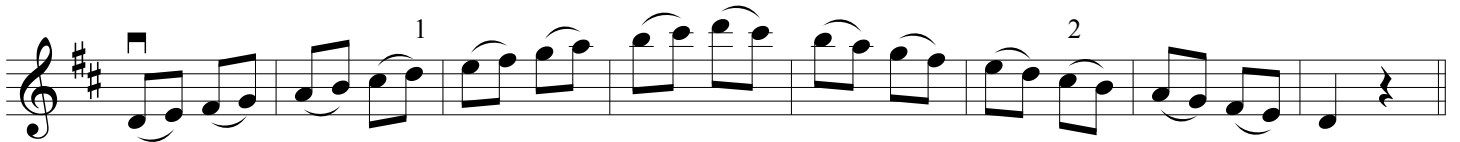
Chromatic (lowest open string)

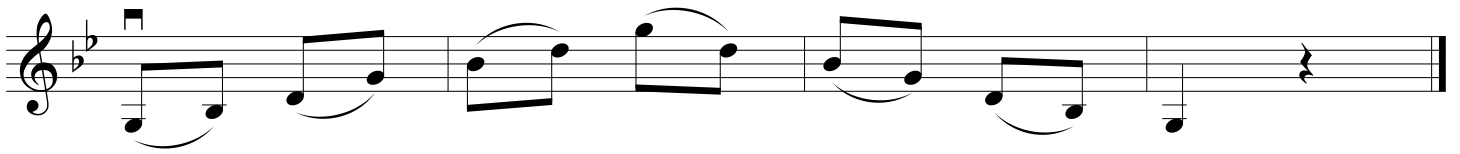
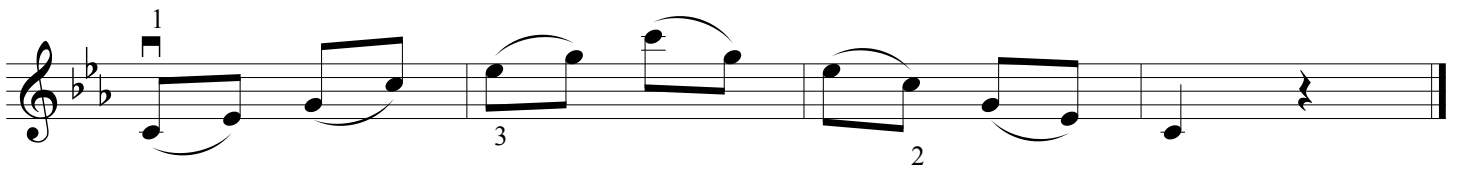
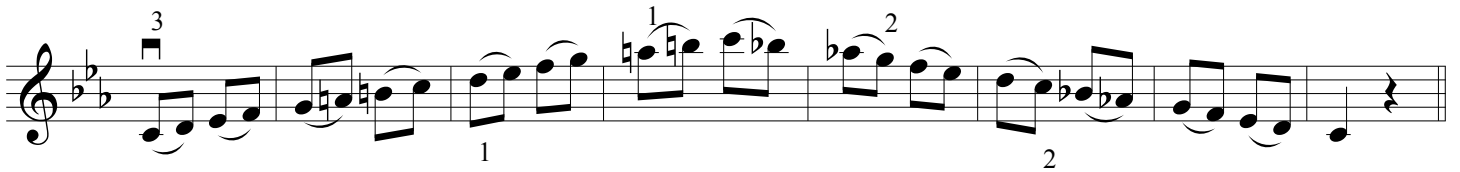
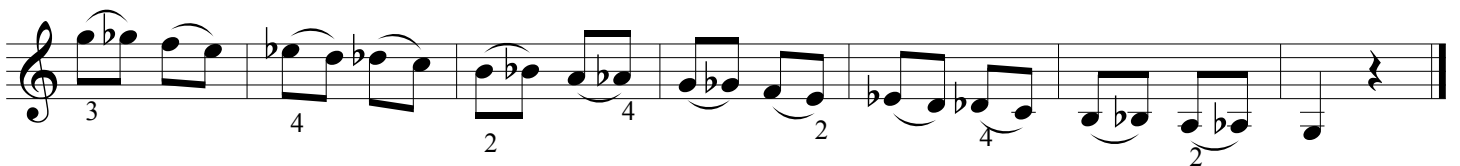
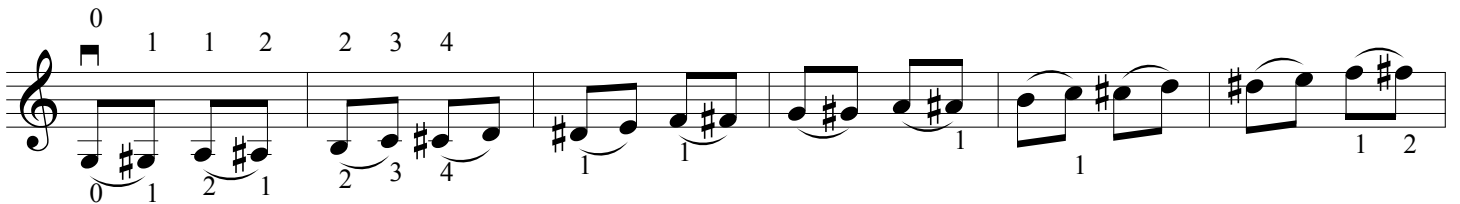
0 1 1 2 2 3 4

Musical notation for the Chromatic scale (lowest open string) in 4/4 time. The scale begins with an open string (indicated by a square symbol above the first note). The notes are: G (0), Ab (1), Bb (1), C (2), D (2), Eb (3), F (4), G (0), Ab (1), Bb (1), C (2), D (2), Eb (3), F (4), G (0), Ab (1), Bb (1), C (2), D (2), Eb (3), F (4), G (0), Ab (1), Bb (1), C (2), D (2), Eb (3), F (4), G (0). The scale is played in two directions: ascending and descending. The descending line ends with a fermata over the final G note.

0 1 2 1 2 3 4 1 2 4 2

Two Octave Major Scales and Arpeggios

C Major**G Major****D Major**

G Melodic Minor**C Melodic Minor****Chromatic (lowest open string)**

All-County/Tri-County Scale Requirements

All scales must be played from memory

Middle School: One octave C, G, D, A, F, B \flat major scales
One octave G melodic minor scale

High School: Two octave C, G, D, A, F, B \flat , E \flat major scales
(Basses play C, D, B \flat , E \flat one octave)
Two octave G melodic minor scale

Jr. All-State (Gr. 7-9) Scale Requirements

All scales must be played from memory

Two octave C, G, D, A, F, B \flat , E \flat major scales with arpeggio
(Basses play B \flat , C, D one octave with arpeggio)
Two octave A and D melodic minor scales
(Basses play E and G melodic minor scales)

Solo & Ensemble Festival Scale Requirements

All scales must be played from memory. Scales are only required for solos.

Grade I-III must play one octave scales
Grade IV-VI must play two octave scales

C, G, D, A, F, B \flat , E \flat major scales
Chromatic scale