

Bass

Scales for Orchestra

One and two octaves with arpeggios

Scales for Orchestra

Bass

One Octave Scales and Arpeggios

Arr. Somerville

C Major



G Major

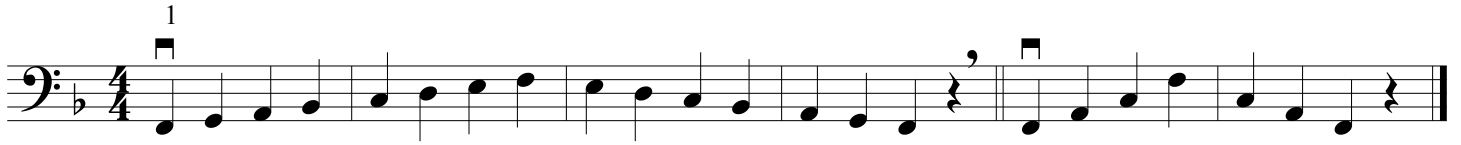
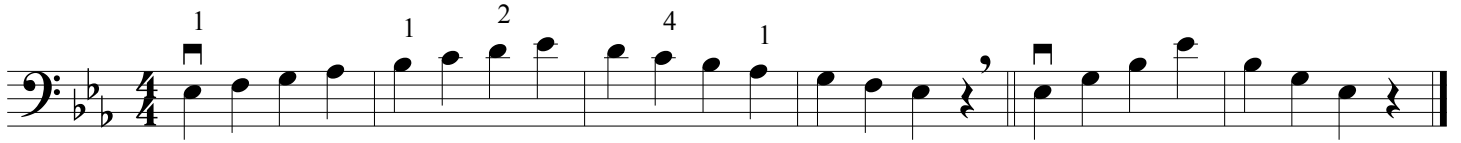


D Major



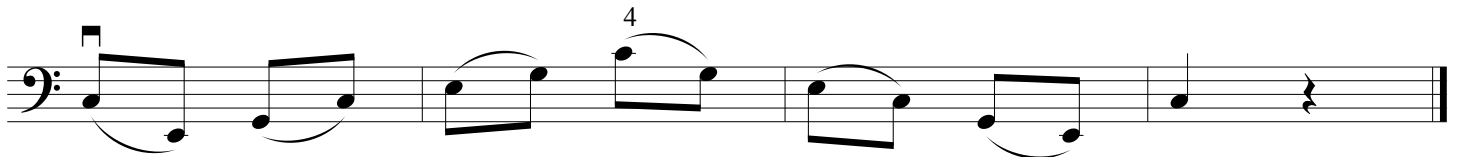
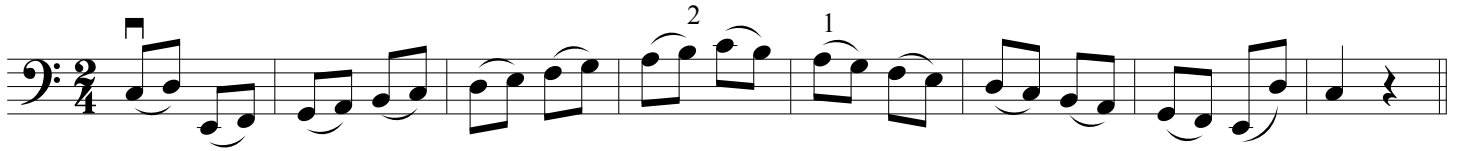
A Major



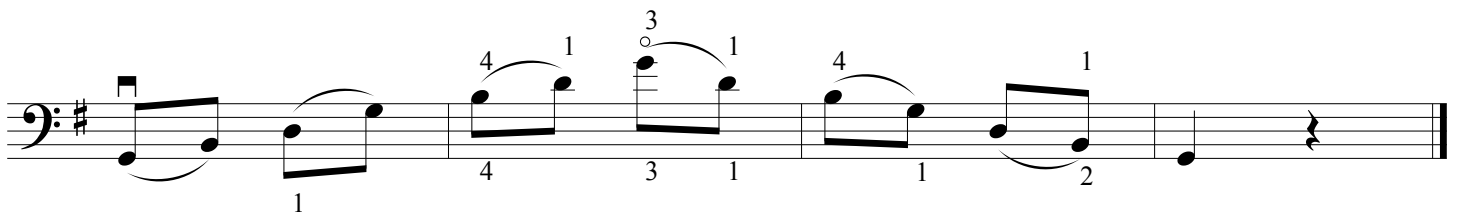
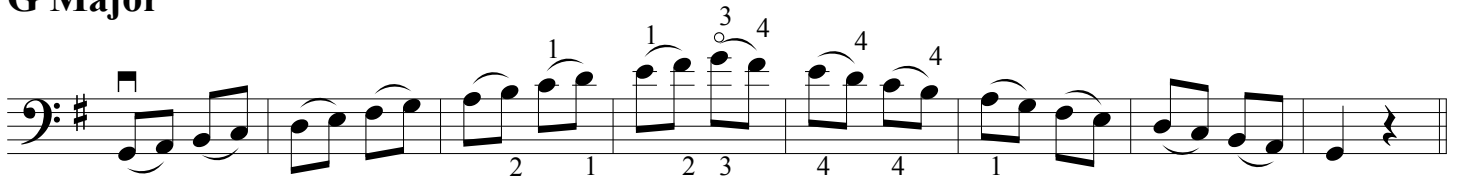
F Major**B \flat Major****E \flat Major****G Melodic Minor****Chromatic (lowest open string)**

Two Octave Major Scales and Arpeggios

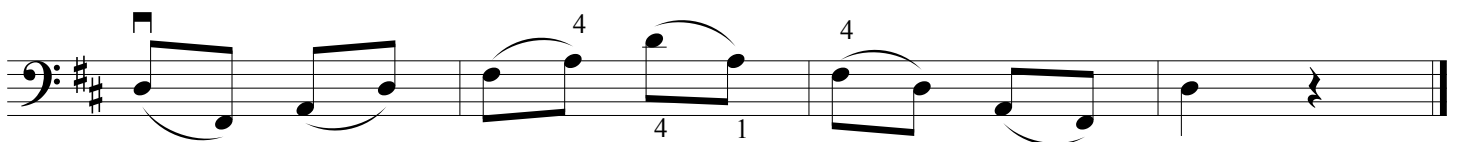
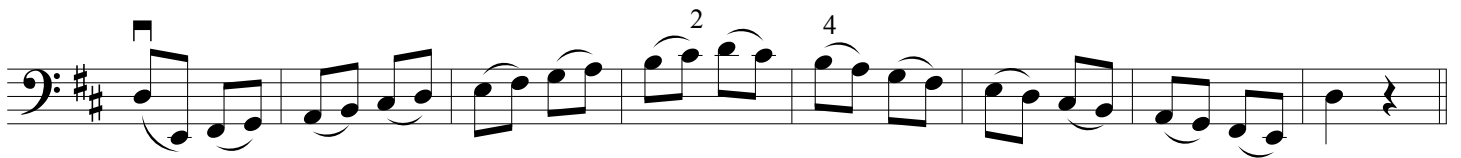
C Major



G Major



D Major



A Major

Two staves of musical notation for the A Major scale in bass clef. The first staff contains the ascending scale with fingerings: 1, 1, 1, 1, 4, 4, 2, 4. The second staff contains the descending scale.

F Major

Two staves of musical notation for the F Major scale in bass clef. The first staff contains the ascending scale with fingerings: 1, 2, 4, 4. The second staff contains the descending scale with fingerings: 4, 1, 4.

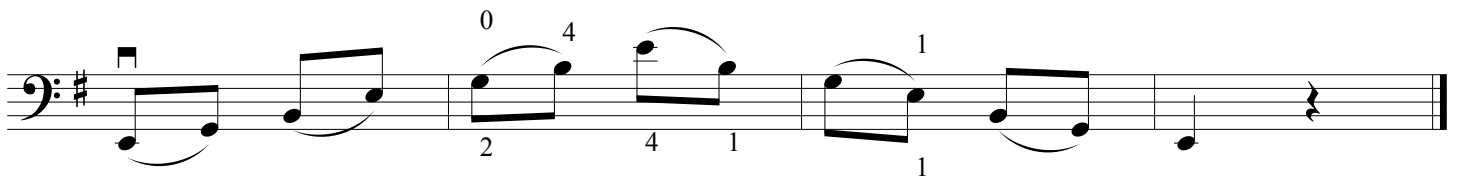
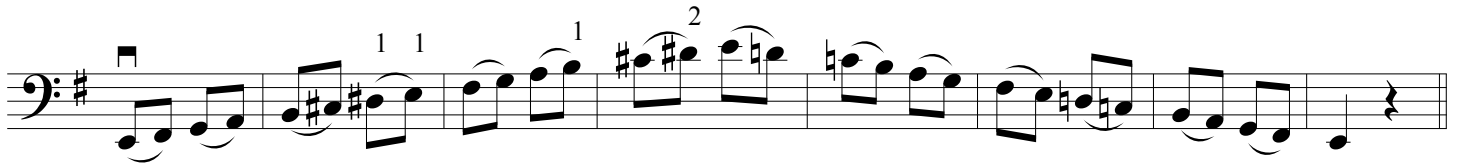
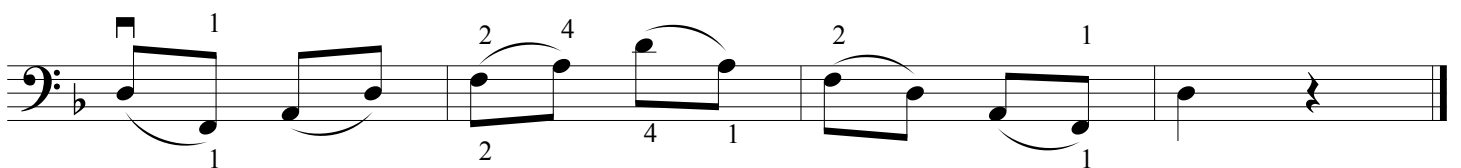
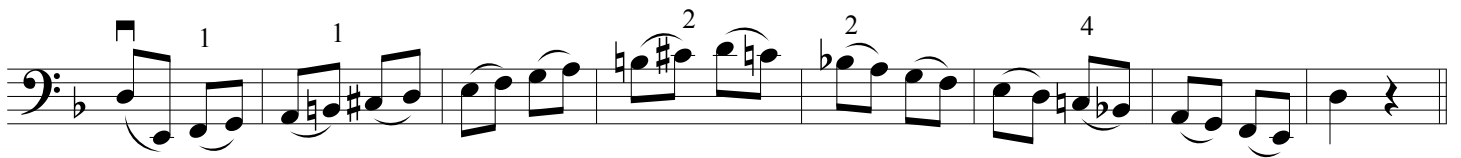
B \flat Major

Two staves of musical notation for the B-flat Major scale in bass clef. The first staff contains the ascending scale. The second staff contains the descending scale.

E \flat Major

Two staves of musical notation for the E-flat Major scale in bass clef. The first staff contains the ascending scale with fingerings: 2, 1, 1, 2, 4, 4, 1, 4, 1. The second staff contains the descending scale with fingerings: 4, 1.

Two Octave Melodic Minor Scales and Minor Arpeggios

A Melodic Minor**E Melodic Minor****D Melodic Minor**

G Melodic Minor

Two staves of musical notation for the G Melodic Minor scale in bass clef. The first staff contains the ascending scale with fingerings: 4, 1, 1, 1, 1, 2, 3, 4, 2, 4, 2, 4. The second staff contains the descending scale with fingerings: 4, 1, 4, 3, 2, 1, 0, 1.

C Melodic Minor

Two staves of musical notation for the C Melodic Minor scale in bass clef. The first staff contains the ascending scale with fingerings: 4, 2, 1, 4, 1. The second staff contains the descending scale with fingerings: 4, 1.

Chromatic (lowest open string)

Two staves of musical notation for the chromatic scale starting on the lowest open string in bass clef. The first staff contains the ascending scale with fingerings: 1, 1, 1, 1, 1, 1, 1, 2, 1. The second staff contains the descending scale with fingerings: 2, 1, 4, 1, 4, 1, 4, 1, 4, 1.

All-County/Tri-County Scale Requirements

All scales must be played from memory

Middle School: One octave C, G, D, A, F, B \flat major scales
One octave G melodic minor scale

High School: Two octave C, G, D, A, F, B \flat , E \flat major scales
(Basses play C, D, B \flat , E \flat one octave)
Two octave G melodic minor scale

Jr. All-State (Gr. 7-9) Scale Requirements

All scales must be played from memory

Two octave C, G, D, A, F, B \flat , E \flat major scales with arpeggio
(Basses play B \flat , C, D one octave with arpeggio)
Two octave A and D melodic minor scales
(Basses play E and G melodic minor scales)

Solo & Ensemble Festival Scale Requirements

All scales must be played from memory. Scales are only required for solos.

Grade I-III must play one octave scales
Grade IV-VI must play two octave scales

C, G, D, A, F, B \flat , E \flat major scales
Chromatic scale